

**CITY REACHERS** these are your  
**CHURCH ANNOUNCEMENTS**  
for Sunday, December 1, 2024



Rev. Dr. Charles H.N. Bobo, Sr., Senior Pastor



*a* **Virgin**  
SHALL **CONCEIVE**  
LIVE  
**DECEMBER 6, 2024 @ 7PM**  
4675 PAGE BLVD. ST. LOUIS, MO 63113

# Volunteers Needed!

Calling all current and former teachers—or anyone passionate about helping middle and high school students succeed in Math, English, or Science! If you're interested in making a difference just once a month starting in the new year, reach out to Sister Candice at 314-477-7309 for more details. Together, we can empower each generation!

'Tis the season for  
*Giving*

December 1st - Sick & Shut In  
December 8th - Staff  
December 15th - Rev. Angela Tate  
December 22nd - Pastor Charles Bobo



**Joint Board  
Meeting  
December 16th**

**Budget Adoption  
Meeting  
December 18th**

**7pm @ Page**

**WEST SIDE  
MEDICAL CITY  
BAPTIST CHURCH**

Monday - Friday 6:30am  
Tuesday at 6:30pm

**CORPORATE  
Prayer**

**DIAL 267-807-9601  
Access Code: 423721847#**

## **Let Us Continue in PRAYER**

Hello City Reacher,

Please join us for **In-Person Prayer** at Dunn Rd. from 7:00 am – 8:00 am. every Monday & Friday. Corporate Prayer Monday-Friday 6:30am, Men's Prayer Tuesday, 6:30pm Come let us pray together. Hope to see you there.

## ● UPCOMING MAC EVENTS ●

**December 7th – MAC Christmas “PJ” Party –  
Dunn Campus - 4 – 6:30pm.**

**Branson – David – April 25th – 26th – Deposit  
due by 11/24—\$75**

**Please see Representative at the MAC Table for  
questions and answers.**

**REACH**

**REGISTER ONLINE**

**groups**

### **Credit Union Update**

**Please stop by the West Side Credit Union (Page Campus) or  
the table (Dunn Rd. Campus) to update or verify your infor-  
mation.**

**( address, email, phone number, beneficiary, etc. )**

# Scholarship Sunday

This month we will have scholarship emphasis! December 29th is the 5th Sunday, which means it'll be Scholarship Sunday! Please prepare your hearts and minds to give to our WSMBC Scholarship Fund. You can even give now through online giving, Givelify, CASH APP, or by bringing your contribution to either campus at the appointed times. Thank you!



WEST SIDE KIDS & TWEENS

Disney  
**MUFASA**

THE LION KING

**DECEMBER 27TH @ 11:30AM**



# The Joy of Giving (Part 2)

LESSON FOR SUNDAY, DECEMBER 8, 2024

## The Question

WHY IS GENEROUS GIVING  
IMPORTANT IN A CHRISTIAN'S  
LIFE?

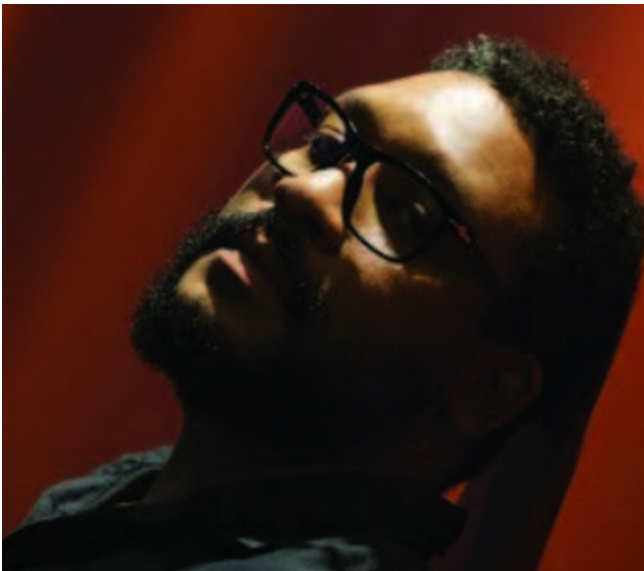
## The Point

LIVE GENEROUSLY AND  
TRUST  
GOD WITH THE OUTCOME.

REACH SMBS TIME: 8:30-9:30 @ DUNN ROAD CAMPUS

REACH SMBS TIME: IMMEDIATELY FOLLOWING 8:00 WORSHIP @ PAGE CAMPUS

WE INVITE YOU TO BECOME A PART OF OUR REACH SMBS FAMILY!



Christopher J Thomas, son of Carolyn Thomas, has been named the Returning Artist for 2024. Chris is being honored by the Arts & Letters Commission of University City on Monday, December 2nd at 7:00 pm, at the UCHS Media Library Center. Register to attend: [ucityschools.org/RA2024](https://ucityschools.org/RA2024)

**PRAYER AND SYMPATHY ARE EXTENDED TO  
THE FOLLOWING FAMILIES:**



To **Sis. Lonnise Thompson** whose mother **Mrs. Geneva Thompson** has passed. Homegoing services were held Saturday, November 30th.

To **Sis. Barabara Moore** whose husband **Mr. Alfred Moore** has passed. Arrangements are pending.

To the family of **Sis. Edna Smith** who passed. A visitation will be held Monday, December at 10:00 a.m. A Homegoing service will follow at 11:00 a.m. at the Page Campus.

**WEST SIDE PLEASE KEEP THESE FAMILIES IN YOUR PRAYERS**



**Sunday Morning Worship**

Sundays at **8am**, Page Blvd. and **10:15am**, Dunn Rd. Or join us **VIRTUALLY** by one of the following: Our church website at **westsidembc.org**, or **facebook.com/westsidestl/**, or **YouTube: Westside MBC**. To **call in** and hear (only) the Worship Service, dial **312 626 6799** and put in Meeting ID **314 535 9002#**

**The Page Blvd. Church building WILL BE OPEN Monday - Friday to receive your tithes and offerings.**

To get proper credit, please put them in an envelope and give them to the designated representative. Our tithes and offering help West Side and the community around us. *Thank you for giving!*

**Corporate Prayer** is held **Monday - Friday 6:30am** and on **Tuesday at 6:30pm for Men's Prayer**. In Person Prayer Monday & Friday **7:00—8:00am on Dunn**.

**Children's Church** (Sunday Mornings) **8:15am** at Page Blvd. **10:15am** at Dunn Rd.

**Children's Sunday Morning Bible Study** (Ages 3-12)  
Page Blvd.: **following worship service**  
Dunn Rd: **8:30am**

**Youth SMBS (13-18)**

**8:30 am every Sunday at Dunn Rd.**

**3rd Sundays following 8 am worship at the Page Campus**

**Youth Church 3rd Sundays at Dunn Rd. ONLY at 10:45 a.m.**

**Mid-Week Bible Study**

Join us on Wednesday's for Mid-Week Bible Study. In your web-browser type **ZOOM.us**, click join meeting, then enter meeting ID **812 9304 6378**. To call in and hear the Bible Study dial **312 626 6799** and put in meeting ID **812 9304 6378#**

**Adult Sunday Morning Bible Study**

**immediately following 8am** worship, at Page Blvd. and **8:30am** before worship at Dunn Rd. **Virtual** participants can join our Zoom meeting with our **NEW** Meeting ID: **817 8884 2491**. To **call in**, dial **(312) 6266799** and put in Meeting ID: **817 8884 2491**



**The Food Pantry**

Is open every Thursday from **11am - 1pm** at the Page Campus.

**The Credit Union**

will be open every Tuesday and Thursday from **11am to 3pm** at the Page campus and will be open Sundays at Page Blvd. following **Worship** and Sundays at Dunn Rd. after **Sunday Morning Bible Study**. We look forward to serving you.